

Pfaff creative 2170

The stitch package at a glance!

Antique hand-embroidery stitches

Decorative stitches that create a hand-embroidered look. Use anywhere you want a unique accent.



Antique quilt stitches

Special hand-look quilt stitch. Use for topstitching and decorating quilting and sewing projects.



Quilt stitches

For topstitching quilt projects with a hand-look stitch and for hand-look quilt applique or pin stitching.



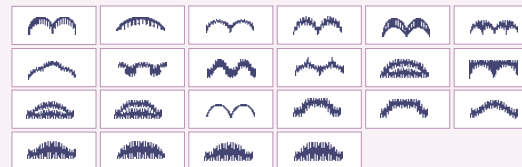
Utility stitches with a decorative look

Decorative joining of overlapped seams and embellishing any sewing projects.



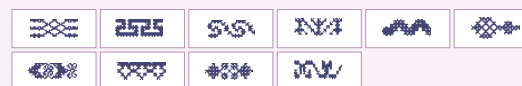
Decorative Scallop stitches

Dense decorative stitch. Use with specialty threads for beautiful effects.



Decorative border cross stitches

For embellishing table linens, crafts or garments.



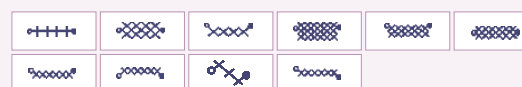
Hem stitches

For ornamental hem stitching. Can be used with a wing needle.



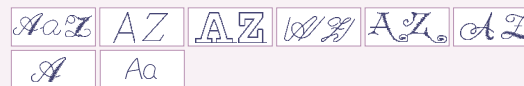
Cross stitches

Perfect for programming in order to create large cross stitch designs.



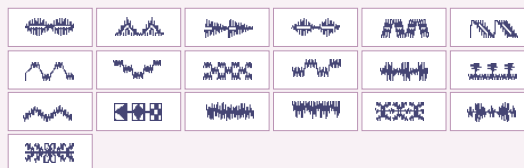
Alphabets

For creating labels, embellishing towels or writing names.



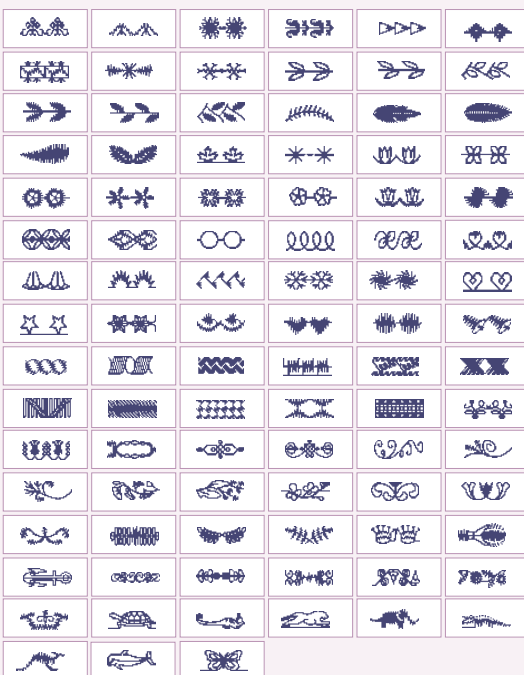
Satin stitches

Dense decorative stitch. Use with specialty threads for beautiful patterns.



Decorative stitches

Decorative stitch for embellishing any projects like crafts, garments and home decorating.



Maxi-stitches

For embellishing any projects like crafts, garments and home decorating.



Utility Stitches

Description

Stitch uses

Utility Stitches	Description	Stitch uses
	Straight stitch	For seaming and topstitching. Nineteen needle positions available for edge stitching or sewing in zippers.
	Stretch triple straight stitch	For reinforced seams such as trouser inseams, underarm seams or decorative topstitching. With many needle positions.
	Zigzag stitch	For finishing seams on fabrics, applique, and inserting lace.
	Three-step zigzag stitch	Strong stitch for seam finishes, sewing elastic, darning tears, and patches.
	Straight stitch reverse	Program permanent reverse for decorative sequences. Also use for bulky projects.
	Elastic overcast stitch	Use to seam and overcast on woven and stretch fabrics.
	Honeycomb stitch	Elastic, decorative stitch for ornamental hem finishing on stretch fabric, for decorative elastic application and sewing with elastic thread in the bobbin.
	Elastic stitch	Strong stitch for seam finishes, sewing elastic, darning tears, and patches.
	Triple stretch stitch	For sewing elastic on sportswear or swimwear.
	Z-Zigzag stitch	For finishing seams on fabrics, applique, and inserting lace.
	Bridging stitch	For bridging, decorative hem stitching and crazy quilting.
	Foundation elastic stitch	For joining overlapped seams on bulky fabrics such as leathers and terry cloth.
	Cross hem stitch	Provides a highly elastic decorative seam for hems on sportswear and casual wear.
	Stretch triple zigzag stitch	Elastic stitch for decorative hems and topstitching.
	Closed overlock stitch	For joining and overcasting stretch fabrics in one operation. The closed seam prevents fabric edges from fraying.
	Closed overlock stitch	For joining and overcasting stretch fabrics in one operation. The closed seam prevents fabric edges from fraying.
	Open overlock stitch	For joining and overcasting stretch fabrics in one operation.
	Zigzag stitch, Right/left needle position	For applique, couching over cords and creating eyelets.
	Standard overlock stitch	For joining and overcasting stretch fabrics in one operation.
	Finished edge overlock stitch	For joining and overcasting stretch fabrics in one operation.
	Light-knit fabric patching stitch	Use to mend light jersey knits. Also for a decorative hem and neckline finish.
	Closed overlock stitch	For joining and overcasting stretch fabrics in one operation. The closed seam prevents fabric edges from fraying.
	Stretch knit overlock stitch	Join and overcast open knit fabrics and jersey.
	Overlock stitch	For joining and overcasting stretch fabrics in one operation.
	Reinforced overlock stitch	For joining and overcasting fraying fabrics. The knitted edge reinforces and prevents fraying on the raw edge.
	Blind stitch	For securing hems invisibly on woven fabrics.
	Elastic blind stitch	For securing hems invisibly and finishing the edge on stretch fabrics.
	Basting stitch	For basting project pieces together.
	Lightning stretch stitch	For joining lightweight stretch fabrics and decorative embellishment.
	Stem stitch	For decorative sewing such as flower stems and underlining letters.
	Linen buttonhole	Buttonhole for blouses, shirts and linen.
	Standard buttonhole	Basic buttonhole for blouses, shirts and jackets. Also use for pillow closures.
	Stretch buttonhole	Buttonhole for stretch fabrics.
	Cross stitch buttonhole	Decorative buttonhole for jackets and for embellishing other garments.
	Round end buttonhole with pointed bartack	Buttonholes for shirts, jackets and trousers.
	Round end buttonhole with lengthwise bartack	Buttonholes for shirts, jackets and trousers.
	Round end buttonhole with crosswise bartack	Buttonholes for shirts, jackets and trousers.
	Eyelet buttonhole with pointed bartack	Professional tailor's buttonhole, for denim jackets and trousers. Or as a decorative effect for kitchen or shower curtains.
	Eyelet buttonhole with lengthwise bartack	Professional tailor's buttonhole, for denim jackets and trousers. Or as a decorative effect for kitchen or shower curtains.
	Professional eyelet buttonhole	Professional tailor's buttonhole, for denim jackets and trousers. Or as a decorative effect for kitchen or shower curtains.
	Round ends buttonhole	Use for light weight garments or jackets.
	Decorative buttonhole with triangle bartack	Decorative buttonhole for jackets and for embellishing other garments.
	Button sewing program	For applying two-hole or four-hole buttons.
	Bartack	For applying belt loops and reinforcing pockets.
	Denim bartack	Decorative bartack for trouser and skirt pockets.
	Decorative bartack	Decorative bartack for trousers and skirts.
	Stippling stitch	Random darning stitch for mending rips and tears. Also great as a decorative accent.
	Programmable darning stitch	Programmable length for darning and repeatable for large repairs.
	Programmable reinforced darning stitch	Programmable length for darning and repeatable for large repairs. Reinforced by horizontal stitches.
	Eyelet	Create eyelets for garment and home textiles. Also great for decorating nostalgia projects.